

MAT 223, Discussion Questions 9.02

1. What are the steps to create a pie chart?

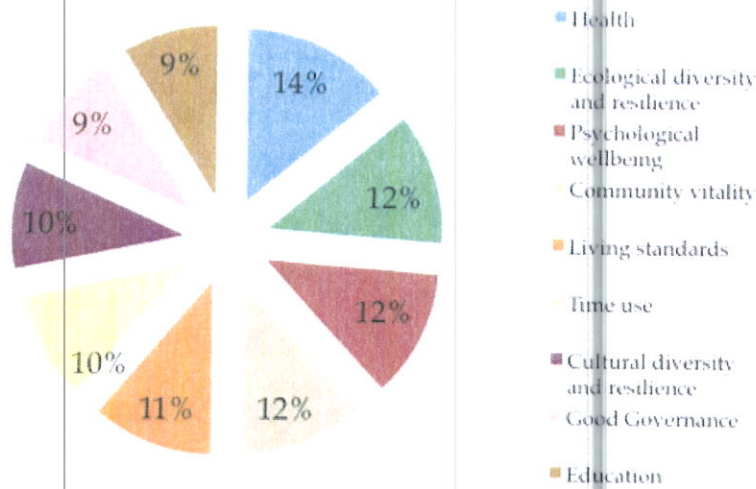
*Calculate the relative frequencies
convert to degrees by multiplying proportions by 360°
divide up the circle appropriately*

2. What kind of data can go into a pie chart?

*Percents of a whole
usually qualitative data*

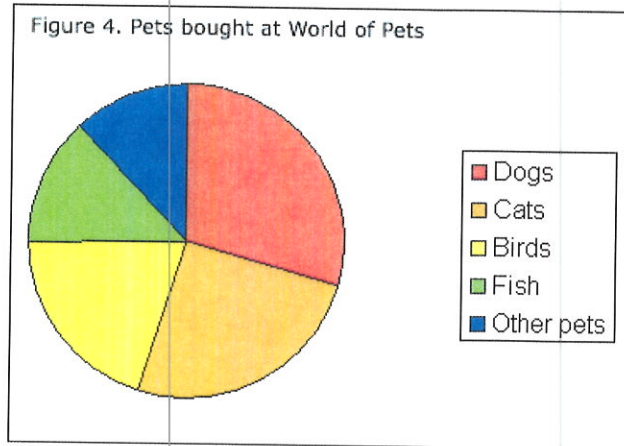
3. Comment on the quality of the following pie charts. Are they good, bad or misused?

Figure 4: In which domains do happy people enjoy sufficiency?



*Poor use of a pie chart
question does not suggest only one answer per person
total less than 100% (but could be a rounding issue)*

a.

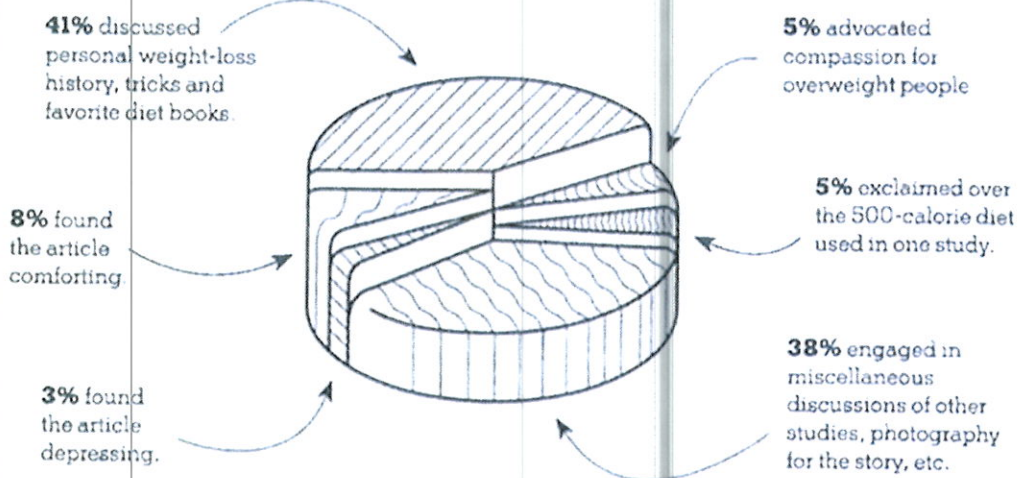


b.

good graph

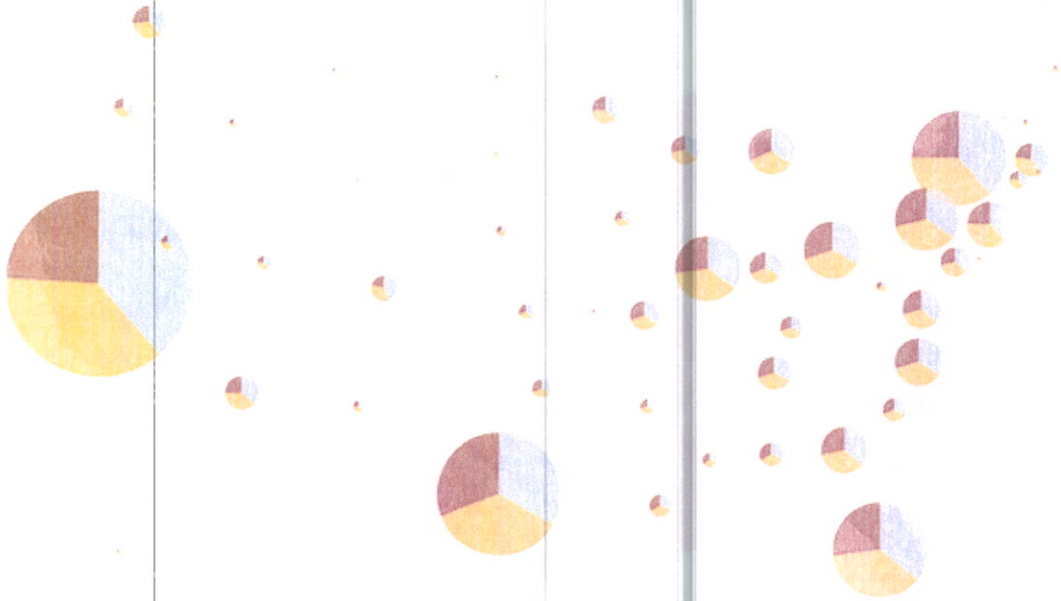
@ ANALYTICS: A Steady Diet of Comments

Of 1,047 comments on Tara Parker-Pope's article, "The Fat Trap":



*3D is misleading
Circles are hard to read.*

c.



*Very poor.
What do pie charts represent?
Sizes are misleading
and graphs overlap each other
Some are too small to see*

d.

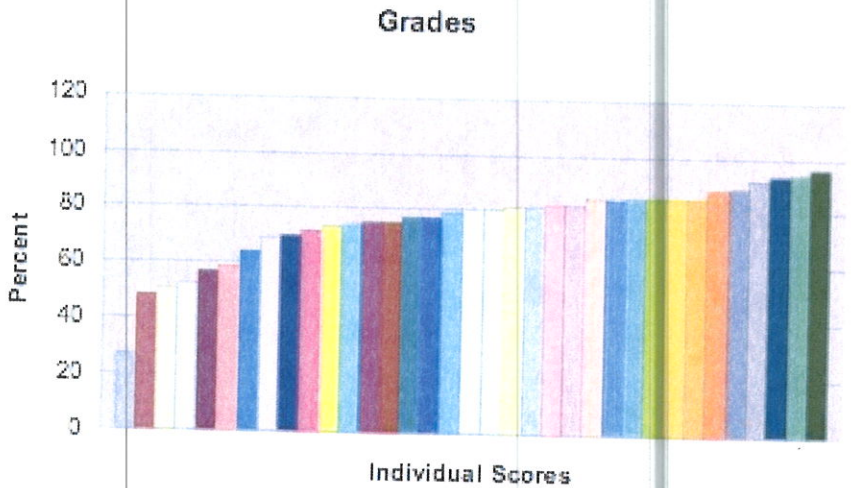
4. What is the difference between a Pareto chart and a bar graph?

*Pareto chart has categories sorted by size
a bar graph need not*

5. How do histograms differ from bar charts?

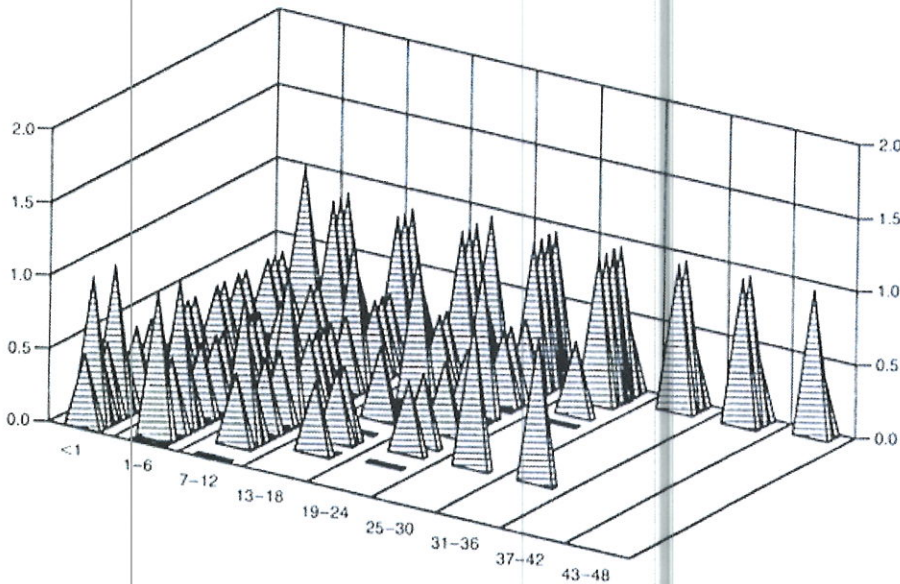
*histograms plot quantitative data
bar graphs display qualitative data*

6. For each of the graphs below comment on what type of graph it is (bar, Pareto, histogram), and whether it is good, bad, misused or misleading.



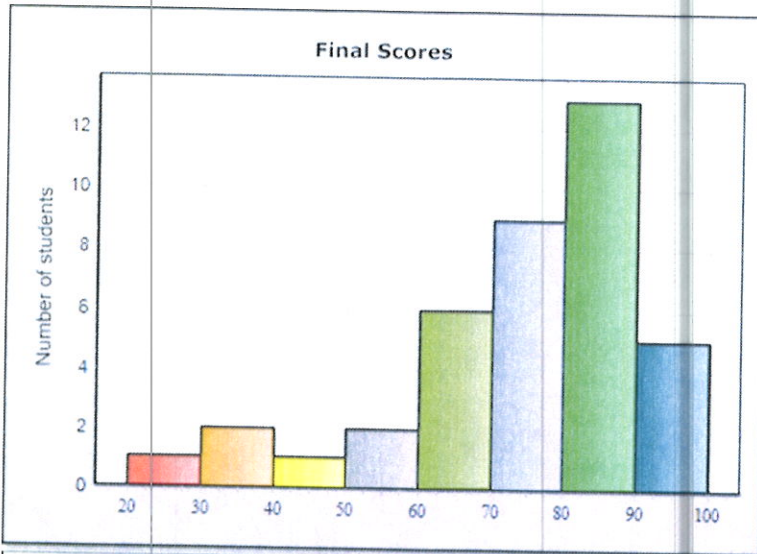
*bar
bad
This should
be a histogram*

a.



*bar,
bad - 3D
is hard to
read.*

b.



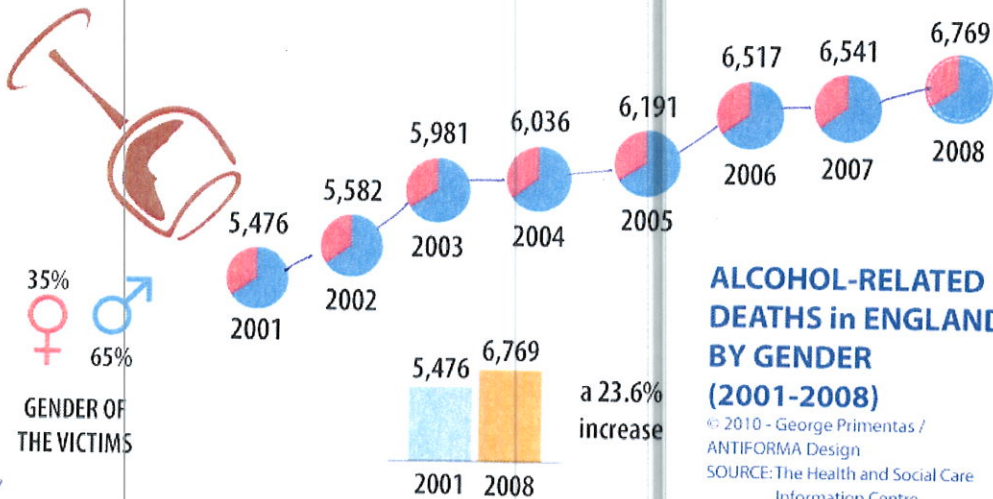
good histogram

c.

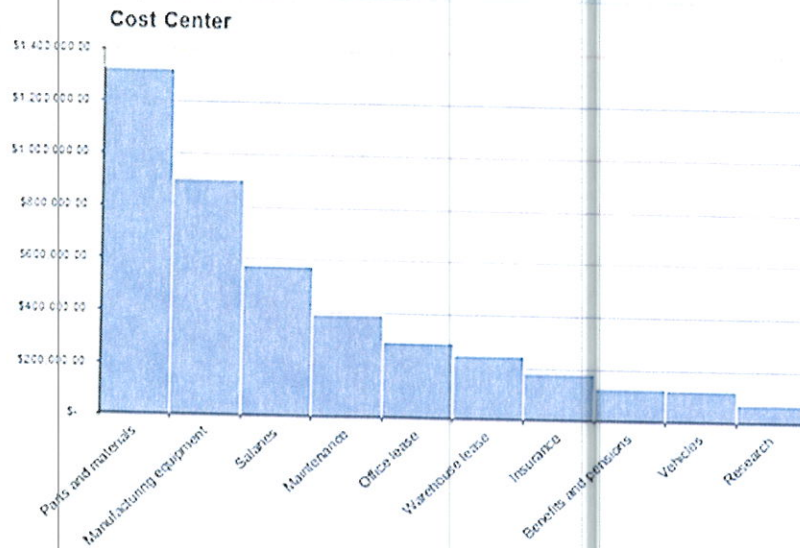
Heaviest drinking day in the week (2008) (for drinkers aged 16 and over)



*Pictograph misleading
Sat drinking looks 4x bigger than Thurs rather than just 2*

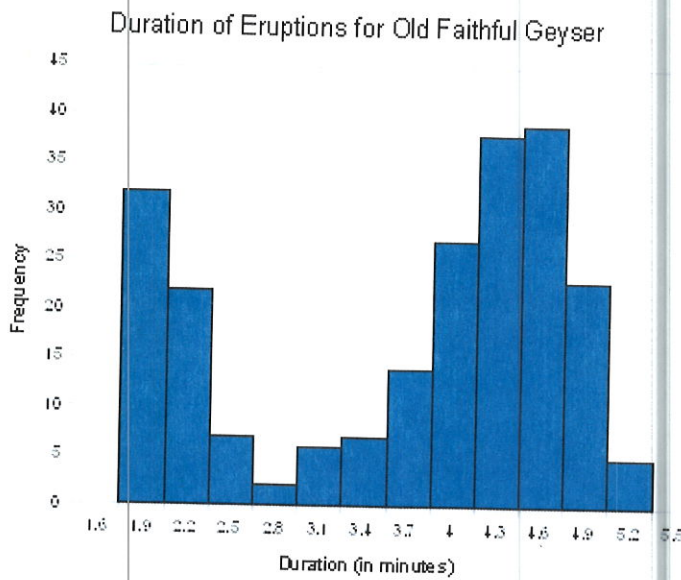


*Pie charts as line graph? Proportions/differences from year-to-year are too similar to tell apart
line graph w/ 2 lines probably better*



*Pareto
Chart
good*

e.



*histogram
good*

f.

7. How can we use bar graphs to compare data? Find an example from the web to share.

answers will vary

side-by-side or stacked

8. Read the article at <http://qz.com/139453/theres-one-key-difference-between-kids-who-excel-at-math-and-those-who-dont/>. What kind of qualitative variables could we be concerned about if we wanted to test this claim?