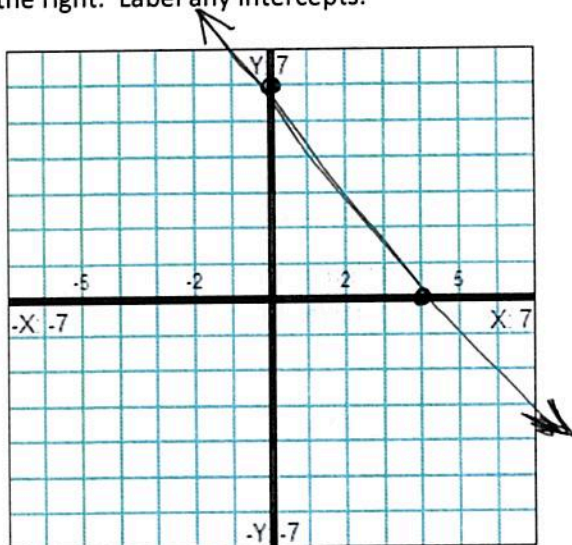


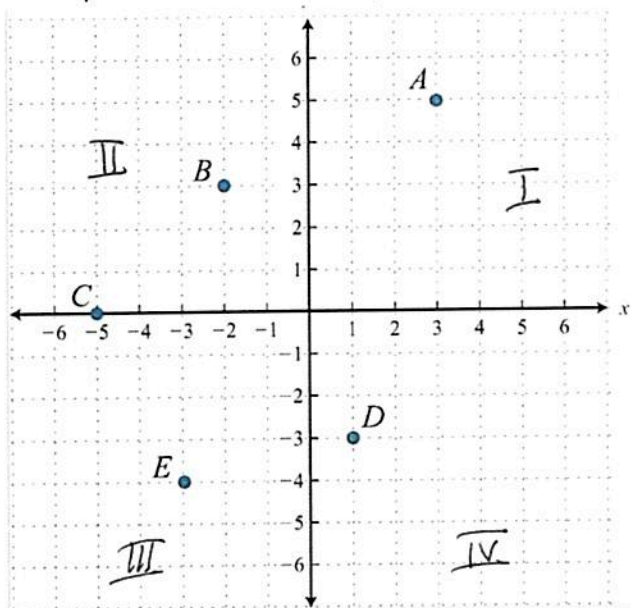
**Instructions:** Show all work. Give exact answers (improper fractions) and do not round unless specifically asked to do so. If you work the problem in your calculator you can write keystrokes to show work for partial credit.

1. Graph the equation  $3x + 2y = 12$  on the graph on the right. Label any intercepts.

$$\begin{aligned} 2y &= 12 \\ y &= 6 && (0, 6) \\ 3x &= 12 \\ x &= 4 && (4, 0) \end{aligned}$$



2. Identify the coordinates of the points on the graph. Label the quadrants.



- A (3, 5)
- B (-2, 3)
- C (-5, 0)
- D (1, -3)
- E (-3, -4)