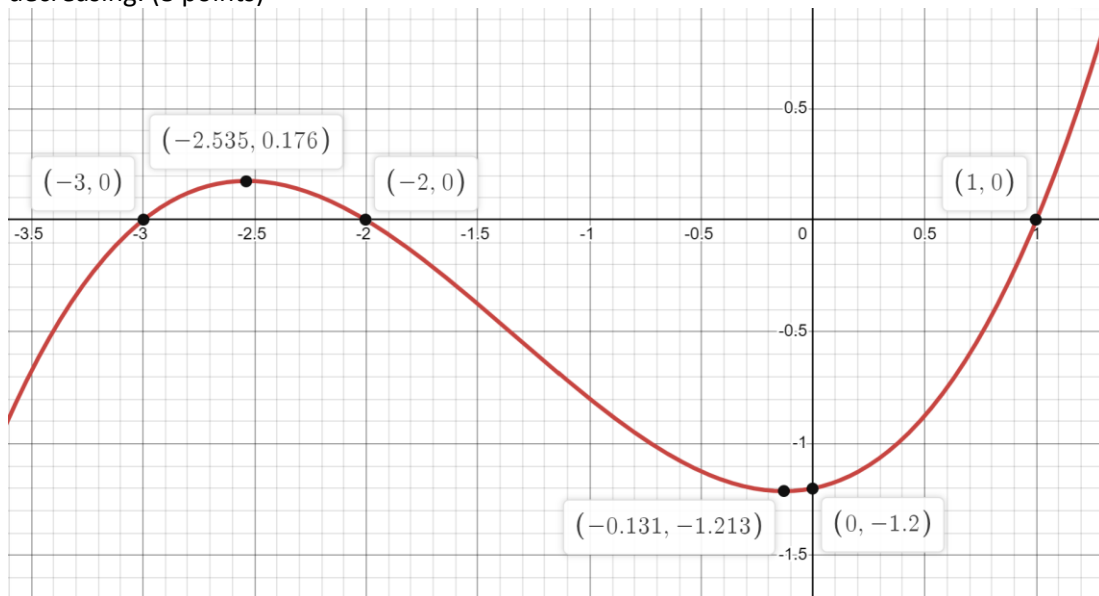
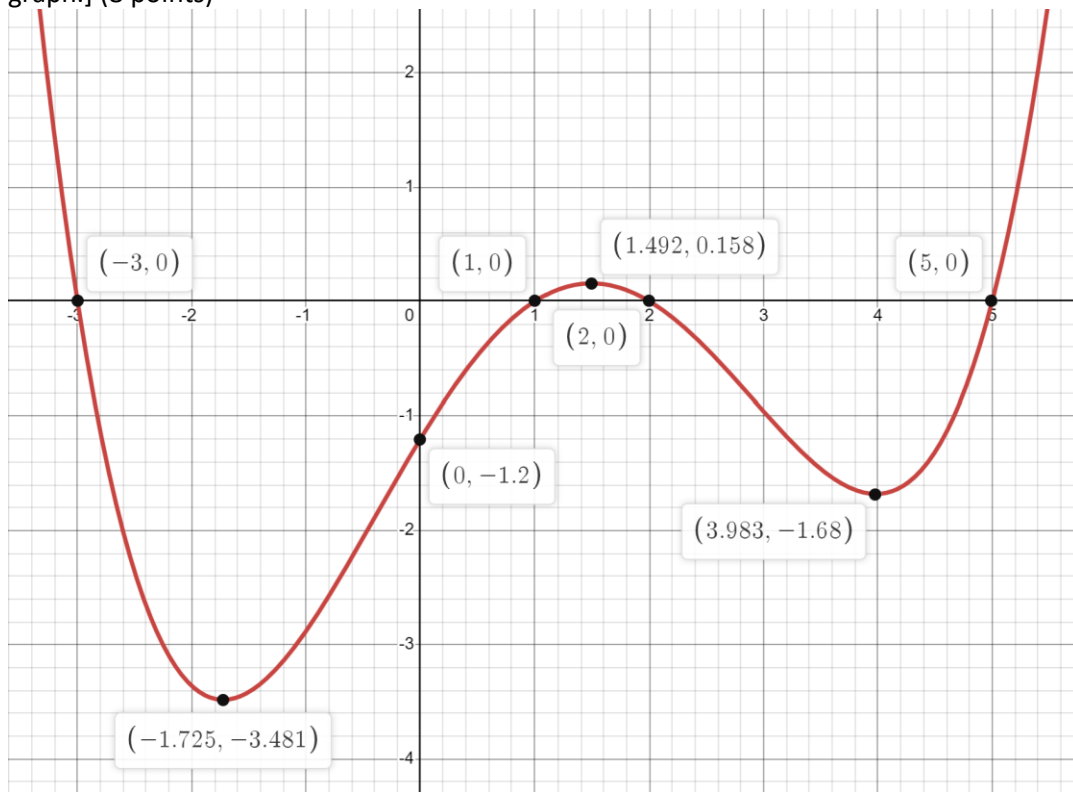


3. Find the length of the arc of the curve $f(x) = \ln(\cos x)$ on the interval $\left[0, \frac{\pi}{4}\right]$. Round to 4 decimal places. (8 points)

4. Given the graph of $f'(x)$ shown below, determine the intervals on which $f(x)$ is increasing or decreasing. (8 points)



5. Given the graph of $f'(x)$, determine the intervals on which $f(x)$ is concave up or concave down. [Hint: first sketch the second derivative based on the first, then find the intervals from that graph.] (8 points)



6. Use differentials to estimate the value of $\sqrt[4]{15.9}$. Round your answer to 7 decimal places if needed. (10 points)

7. Find the absolute extrema of $f(x) = 3x^4 - 4x^3 - 12x^2 + 6$ on the interval $[-3,1]$. (12 points)

8. Find the value of each limit. (8 points each for a-c)

a. $\lim_{x \rightarrow \infty} \sin\left(\frac{1}{x}\right)$

b. $\lim_{x \rightarrow \infty} (x)^{2/x}$

c. $\lim_{x \rightarrow 0} \frac{\cos(3x) - \cos(11x)}{x^2}$

d. The following questions refer to the graph of $f(x)$ shown. (3 points each)

i. $\lim_{x \rightarrow 0^+} f(x)$

ii. $\lim_{x \rightarrow 0^-} f(x)$

iii. $\lim_{x \rightarrow 0} f(x)$

iv. $\lim_{x \rightarrow 2^-} f(x)$

v. $\lim_{x \rightarrow 2^+} f(x)$

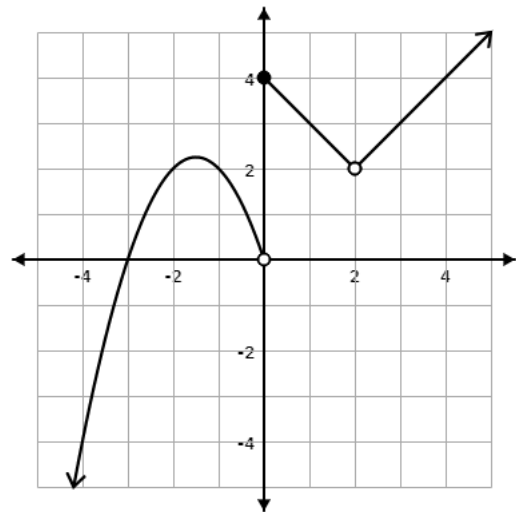
vi. $\lim_{x \rightarrow 2} f(x)$

vii. Is the graph continuous at $x = 0$?

viii. Is the graph continuous at $x = 2$?

ix. If the graph is discontinuous at $x = 0$, what kind of discontinuity is it? If it's not discontinuous, use NA.

x. If the graph is discontinuous at $x = 2$, what kind of discontinuity is it? If it's not discontinuous, use NA.



9. Find the value of the indicated derivative. (6 points each)

a. $f(x) = 2x^2 - \frac{12}{\sqrt{x}}, f'(-1)$

b. $f(x) = (4x - x^2)^4, f''(1)$

Part 2: In this section you will record your answers on paper along with your work. After scanning, submit them to a Canvas dropbox as directed. These questions will be graded by hand.

10. Find the volume of the solid of revolution for the region bounded by $x = y^2$ and $x = 2y$ rotated around the y-axis. (13 points)

11. Find the volume of the solid of revolution for the region bounded by $y = x^2 - 6x + 5, y = 0$ rotated around the x-axis. (12 points)

12. Find the surface area of the surface defined by $y = \ln x$, on the interval $[1,4]$, revolved around the y -axis. After setting up the integral, you may need to integrate it numerically. (12 points)

13. Find the work done by winding up a hanging cable of length 200 feet, and weight density 4 lbs/ft. (15 points)

14. Create a sign chart for the first and second derivatives of $f(x) = \frac{4x}{x^2+1}$. Identify any critical points, cusps, and inflection points. Use this information to sketch a graph of the curve. (10 points)

15. Find the antiderivatives. (8 points each)

a. $\int x^{2e} + 9 \cot(2x) \csc(2x) - 7 dx$

b. $\int e^x \cosh(e^x) - \csc^2 x - \frac{1}{\sqrt{1-x^2}} dx$

c. $\int \frac{\ln x}{x} - \frac{1}{x-3} - 4^x dx$

d. $\int \frac{x}{1+x^4} dx$

16. Find the limit: $\lim_{x \rightarrow 36} \frac{x-36}{\sqrt{x}-6}$ (8 points)

17. A particle is moving along a trajectory defined by $s(t) = 3t^2 - 5t + 4$. Find the instantaneous velocity at the point $t = 3$ using the limit definition of the derivative. You should provide both the general equation, and the velocity at that point. (8 points)

18. Find the derivative of each of the following. If no derivative notation is specified, find the first derivative only. If a derivative notation is specified with the function, find the indicated derivative. (8 points each)

a. $f(x) = e^{\cot x}$

b. $f(x) = x \cosh x, f''(x)$

c. $f(x) = \operatorname{arcsec}(e^{x^2})$

d. $xy^2 + y = xy - \arctan x, \frac{dy}{dx}$